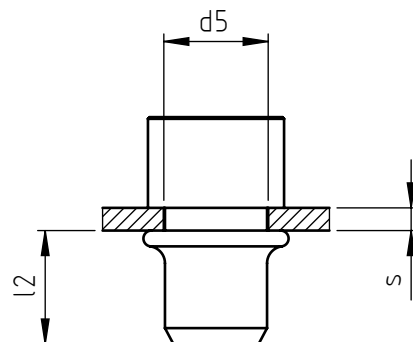
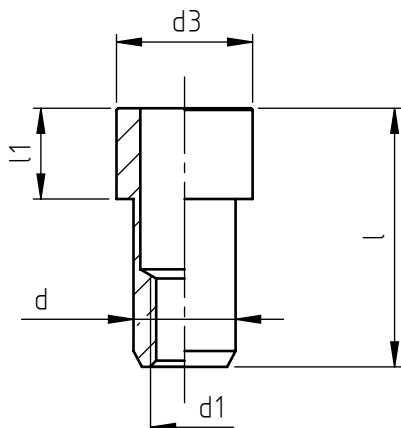


Application: metal and not metal sheets.
Assembly: with special hand or pneumatic tools.



code	steel	stainless steel	s grip	l	d1 6H	d	d3	l1	d5 +0,15 0	l2 *
TC/DIST M 3/_	8	X	0,5 ÷ 2,0	16,7	M 3	5	8	8	5	6
TC/DIST/L M 3/_	8	X	2,0 ÷ 3,5	18,2						
TC/DIST M 4/_	8	X	0,5 ÷ 2,0	17,7	M 4	6	9	8	6	6,5
TC/DIST/L M 4/_	8	X	2,0 ÷ 4,0	19,7						
TC/DIST M 5/_	8	X	0,5 ÷ 2,5	19,5	M 5	7	10	8	7	7
TC/DIST/L M 5/_	8	X	2,5 ÷ 4,5	21,5						
TC/DIST M 6/_	8	X	0,5 ÷ 3,0	22,8	M 6	9	12	8	9	9,5
TC/DIST/L M 6/_	8	X	3,0 ÷ 5,5	25,3						
TC/DIST M 8/_	8	X	0,5 ÷ 3,5	23,7	M 8	11	14	8	11	9,5
TC/DIST/L M 8/_	8	X	3,5 ÷ 6,0	26,2						
TC/DIST M10/_	8	X	0,5 ÷ 3,5	27,5	M10	13	16	8	13	12,5
TC/DIST/L M10/_	8	X	3,5 ÷ 6,0	30						

Non binding dimensions, expressed in mm.

* Dimension determined from the average of the grip "s" min and max values.

☒ Standard
 ☐ On demand
 ☐ Not manufactured

Material: steel nr.1.0718
stainless steel nr.1.4305
Finishing: steel: white zinc-plated
stainless steel: natural
Tolerances: according to UNI standards EN 22768-1
Thread: ISO 6 H metric
Example: blind threaded nut, cylindrical spacing
head, round shank, stainless steel,
grip 2,0 mm, M 6 thread:

TC/DIST M 6/X

//8
 //X

