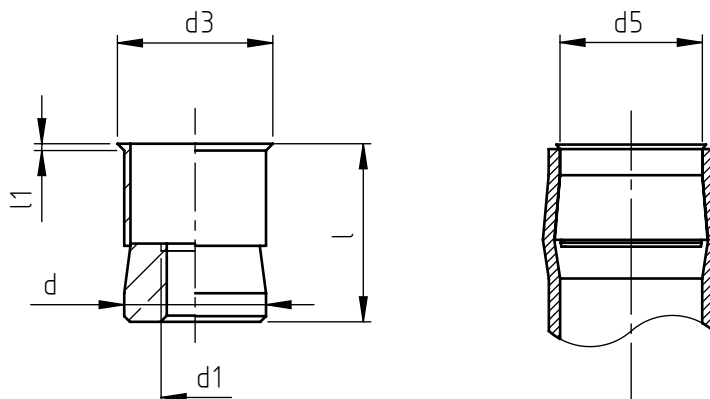


Application: on the top of tubular cylindrical parts.
Assembly: with special hand or pneumatic tools.



code	d5 *	l	d1	d	d3	l1 ~
TTN M 6/9,5/8	9,5 ÷ 10,5	13,2	M 6	9,5	10	0,6
TTN M 6/11/8	11,0 ÷ 11,8	15,7	M 6	11	11,7	0,6
TTN M 6/11,5/8	11,5 ÷ 12,5	15,7	M 6	11,5	12	0,6
TTN M 6/12,5/8	12,5 ÷ 13,5	15,7	M 6	12,5	13	0,6
TTN M 6/13,5/8	13,5 ÷ 14,7	15,7	M 6	13,5	14	0,7
TTN M 6/14,8/8	14,8 ÷ 16,2	18,5	M 6	14,8	15,8	0,7
TTN M 6/16,8/8	16,8 ÷ 18,2	21,6	M 6	16,8	17,4	0,7
TTN M 6/18,3/8	18,3 ÷ 19,9	21,6	M 6	18,3	19	0,7

Non binding dimensions, expressed in mm.

* To obtain a correct usage of the product, it is necessary to make installation tests to determine the best fitting conditions.

Standard
 On demand
 Not manufactured

Material: steel nr.1.0718
 Finishing: white zinc-plated
 Tolerances: according to UNI standards EN 22768-1
 Thread: ISO 6 H metric
 Example: blind threaded nut, low profile head,
 round shank, steel, pipe internal
 diameter 13,0 mm, M 6 thread:
 TTN M6/12,5/8

TTN M6/12,5/8

