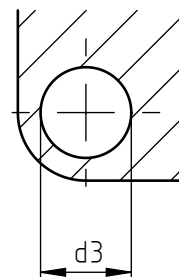
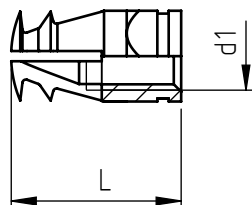


Applications: fibercement.

Assembly: by pressure through expansion anchorage.



code	metric thread	total length	hole diameter	minimum hole depth	minimum panel thickness
	d1	L	d3		
M 04 TE 55	M 4	5,5	5,5	5,5	7

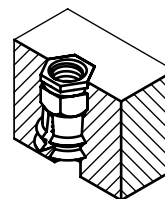
Non binding dimensions, expressed in mm.

For a correct usage of the product it is advisable to carry out some preliminary assembling tests to determine the correct hole diameter.

Material: brass

Finishing: nickel plated

Tolerances: where not specified, coarse degree of accuracy, according to ISO 2768-m



SPECIALINSERT[®] COMMITS ITSELF TO CONTINUOUSLY IMPROVE ITS PRODUCTS. IT RESERVES THE RIGHT TO CHANGE THEIR TECHNICAL AND STRUCTURAL CHARACTERISTICS WITHOUT PRIOR NOTICE. ALL RIGHTS ARE RESERVED AND THE DUPLICATE, EVEN PARTIAL, OF THESE DOCUMENTS, AS WELL AS ITS DISTRIBUTION TO THIRD PARTIES, ARE FORBIDDEN, UNLESS OTHERWISE AND EXPRESSLY AUTHORIZED BY SPECIALINSERT.