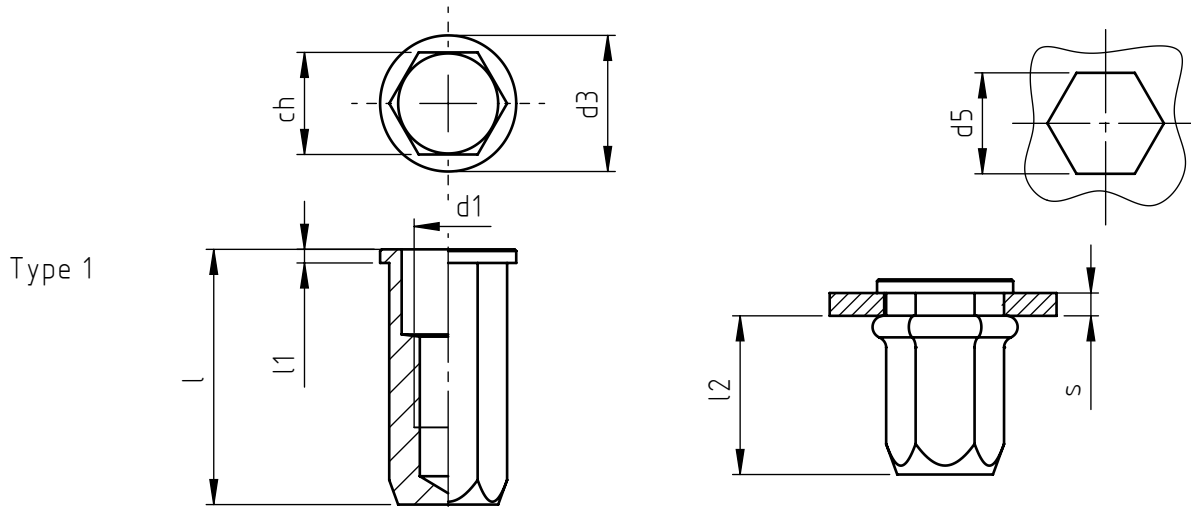


Application: metal and not metal sheets.  
Assembly: with special hand or pneumatic tools.



code	steel	stainless steel	s grip	l	d1 6H	ch	d3	l1	d5 +0,15 0	l2 *
**10446A1/M 3/___	8	--	0,5 ÷ 2,0	13	M 3	5	8	0,8	5	9,5
**10446B1/M 3/___	8	--	2,0 ÷ 3,5	14,5						
10446A1/M 4/___	8	X	0,5 ÷ 2,0	15	M 4	6	9	0,8	6	11
10446B1/M 4/___	8	X	2,0 ÷ 4,0	17						
10446A1/M 5/___	8	X	0,5 ÷ 2,5	18	M 5	7	10	1	7	12,5
10446B1/M 5/___	8	X	2,5 ÷ 4,5	20						
10446A1/M 6/___	8	X	0,5 ÷ 3,0	22,5	M 6	9	12	1,2	9	16
10446B1/M 6/___	8	X	3,0 ÷ 5,5	25						
10446A1/M 8/___	8	X	0,5 ÷ 3,5	25	M 8	11	14	1,3	11	17,5
10446B1/M 8/___	8	X	3,5 ÷ 6,0	27,5						
10446A1/M10/___	8	X	0,5 ÷ 3,5	30,5	M10	13	17	1,7	13	21,5
10446B1/M10/___	8	X	3,5 ÷ 6,0	33						

Non binding dimensions, expressed in mm.

\* Dimension determined from the average of the grip "s" min and max values.

\*\* No UNI standard.

Standard

On demand

Not manufactured

Ref. UNI 10446 standard

Material: steel nr.1.0303  
stainless steel nr. 1.4567

Finishing: steel: white zinc-plated  
stainless steel: natural

Tolerances: according to UNI standards EN 22768-1

Thread: ISO 6 H metric

Example: blind threaded nut, cylindrical head,  
hexagonal close-end shank, stainless steel,  
grip 2,0 mm, M 6 thread:

10446A1/M 6/X

\_\_\_ / \_\_\_ /8  
\_\_\_ / \_\_\_ /X

