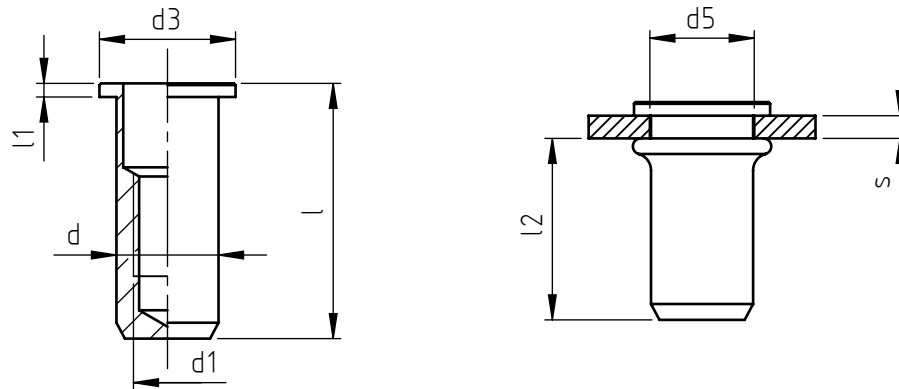


Application: metal and not metal sheet.  
Assembly: with special hand or pneumatic tools.



code	steel	steel	stainless steel	stainless steel	s grip	l	d1 6H	d	d3	l1	d5 +0,15 0	l2 *
9204A/M 3/___	8	--	X	--	0,5 ÷ 2,0	13	M 3	5	8	0,8	5	9,5
9204B/M 3/___	8	--	X	--	2,0 ÷ 3,5	14,5						
9204A/M 4/___	8	8S	X	XS	0,5 ÷ 2,0	15	M 4	6	9	0,8	6	11
9204B/M 4/___	8	8S	X	XS	2,0 ÷ 4,0	17						
9204A/M 5/___	8	8S	X	XS	0,5 ÷ 2,5	18	M 5	7	10	1	7	12,5
9204B/M 5/___	8	8S	X	XS	2,5 ÷ 4,5	20						
9204A/M 6/___	8	8S	X	XS	0,5 ÷ 3,0	22,5	M 6	9	12	1,2	9	16
9204B/M 6/___	8	8S	X	XS	3,0 ÷ 5,5	25						
9204A/M 8/___	8	8S	X	XS	0,5 ÷ 3,5	25	M 8	11	14	1,3	11	17,5
9204B/M 8/___	8	8S	X	XS	3,5 ÷ 6,0	27,5						
9204A/M10/___	8	8S	X	XS	0,5 ÷ 3,5	30	M10	13	16	1,5	13	21,5
9204B/M10/___	8	8S	X	XS	3,5 ÷ 6,0	32,5						
9204A/M12/___	8	--	X	--	0,5 ÷ 3,5	36,5	M12	15	18	2	15	27,5
9204B/M12/___	8	--	X	--	3,5 ÷ 6,5	39,5						

Non binding dimensions, expressed in mm.

\* Dimension determined from the average of the grip "s" min and max values.

Standard
  On demand
  Not manufactured

Ref. UNI 9204 standard

Material: steel nr.1.0718  
steel nr.1.0303  
stainless steel nr.1.4305  
stainless steel nr.1.4567

Finishing: steel: white zinc-plated  
stainless steel: natural

Tolerances: according to UNI standards EN 22768-1

Thread: ISO 6 H metric

Example: blind threaded nut, cylindrical head,  
round close-end shank, stainless steel,  
grip 2,0 mm, M 6 thread:

9204A/M 6/X

\_\_\_/\_\_\_/8  
\_\_\_/\_\_\_/8S  
\_\_\_/\_\_\_/X  
\_\_\_/\_\_\_/XS

