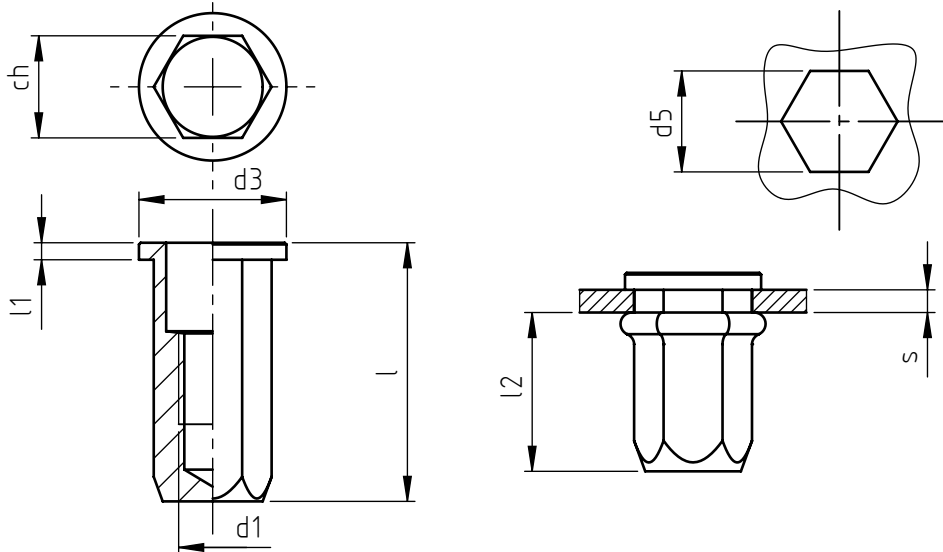


Application: metal and not metal sheets.  
Assembly: with special hand or pneumatic tools.



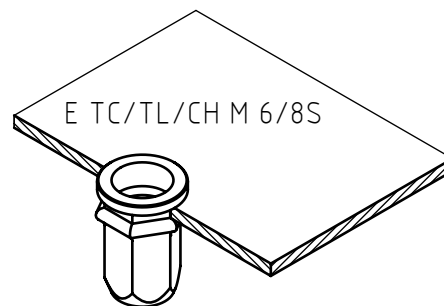
code	s grip	l	d1 6H	ch	d3	l1	d5 +0,15 0	l2 *
E TC/TL/CH M 3/8S	0,5 ÷ 2,0	13	M 3	5	9	0,8	5	9,5
E TC/TL/LCH M 3/8S	2,0 ÷ 3,5	14,5						
E TC/TL/CH M 4/8S	0,5 ÷ 2,0	15	M 4	6	10	0,8	6	11
E TC/TL/LCH M 4/8S	2,0 ÷ 4,0	17						
E TC/TL/CH M 5/8S	0,5 ÷ 2,5	18	M 5	7	11	1	7	12,5
E TC/TL/LCH M 5/8S	2,5 ÷ 4,5	20						
E TC/TL/CH M 6/8S	0,5 ÷ 3,0	22,8	M 6	9	13	1,5	9	16
E TC/TL/LCH M6/8S	3,0 ÷ 5,5	25,3						
E TC/TL/CH M 8/8S	0,5 ÷ 3,5	26	M 8	11	16	1,5	11	18
E TC/TL/LCH M 8/8S	3,5 ÷ 6,0	28,5						
E TC/TL/CH M10/8S	0,5 ÷ 3,5	31	M10	13	18	1,8	13	23
E TC/TL/LCH M10/8S	3,5 ÷ 6,0	33,5						
E TC/TL/CH M12/8S	0,5 ÷ 3,5	38,5	M12	16	23	2	16	29
E TC/TL/LCH M12/8S	3,5 ÷ 6,5	41,5						

Non binding dimensions, expressed in mm.

\* Dimension determined from the average of the grip "s" min and max values.

Standard     
  On demand     
  -- Not manufactured

Material: steel nr.1.0303  
 Finishing: white zinc-plated  
 Tolerances: according to UNI standards EN 22768-1  
 Thread: ISO 6 H metric  
 Example: blind threaded nut, cylindrical large  
 flange head, hexagonal close-end shank,  
 steel, grip 2,0 mm, thread M 6:  
 E TC/TL/CH M 6/8S



SPECIALINSERT COMMITS ITSELF TO CONTINUOUSLY IMPROVE ITS PRODUCTS. IT RESERVES THE RIGHT TO CHANGE THEIR TECHNICAL AND STRUCTURAL CHARACTERISTICS WITHOUT PRIOR NOTICE. ALL RIGHTS ARE RESERVED AND THE DUPLICATE, EVEN PARTIAL OF THESE DOCUMENTS, AS WELL AS ITS DISTRIBUTION TO THIRD PARTIES ARE FORBIDDEN, UNLESS OTHERWISE AND EXPRESSLY AUTHORIZED BY SPECIALINSERT.