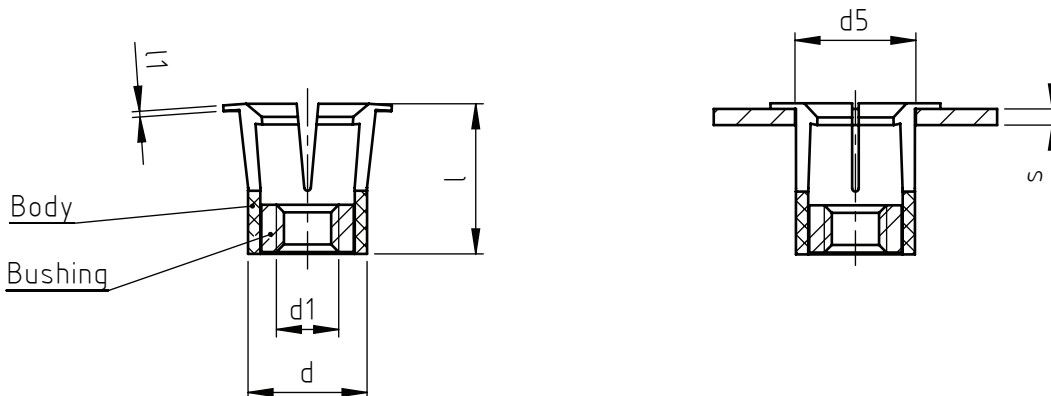


Applications: boxed or tubular parts, fragile materials, plastic sheets and other materials.  
Assembly: Place the insert on the hole. Assembly and deformation of insert rivet are achieved by screwing. No special tool is required.

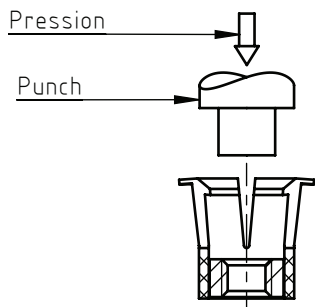


Code	S grip	l	d1 6H	l1	d5 <sup>+0,15</sup> <sub>0</sub>	d
NN025	0,8 ÷ 1,2	8,0	M 2,5	0,75	6,4	6,3
NN030	1,3 ÷ 2,0	9,6	M 3	0,75	8,0	7,9
NN040	2,1 ÷ 2,4	12,7	M 4	0,75	10,3	10,2
NN050	2,1 ÷ 2,4	12,7	M 5	0,75	10,3	10,2
NN060	2,5 ÷ 3,2	15,9	M 6	0,75	12,7	12,6
NN080	3,3 ÷ 4,0	19,0	M 8	0,75	14,3	14,2

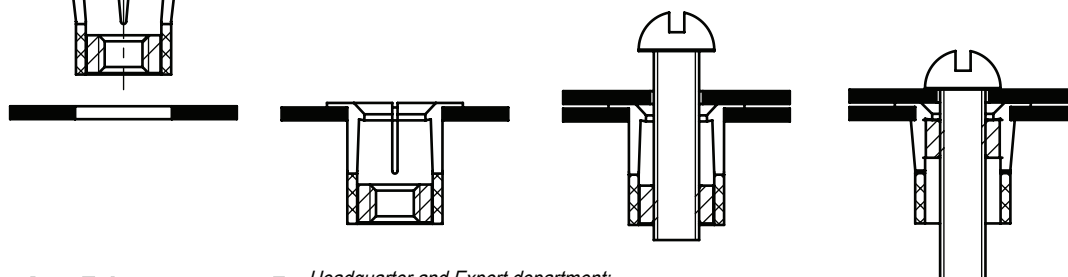
Non binding dimensions, expressed in mm.

Standard
  On demand
  Not manufactured

Material: body - white nylon, bushing - light alloy  
 Finishing: natural  
 Tolerances: where not specified, coarse degree of accuracy, according to ISO 2768-m.  
 Threading d1: metric ISO 6H  
 Example: tubular nylon-nut threaded insert, M5 thread, grip 2,1 ÷ 2,4 mm: NN050



Assembly method: recommend the use of a punch to assembly the insert in the seat.



SPECIALINSERT - COMMITS ITSELF TO CONTINUOUSLY IMPROVE ITS PRODUCTS - IT RESERVES THE RIGHT TO CHANGE THEIR TECHNICAL AND STRUCTURAL CHARACTERISTICS WITHOUT PRIOR NOTICE - ALL RIGHTS ARE RESERVED AND THE DUPLICATE, EVEN PARTIAL OF THESE DOCUMENTS, AS WELL AS ITS DISTRIBUTION TO THIRD PARTIES ARE FORBIDDEN, UNLESS OTHERWISE AND EXPRESSLY AUTHORIZED BY SPECIALINSERT.

#### WHAT IS NYLON NUT

Nylon - nut is a tubular threaded insert formed by a light alloy nut embedded in a nylon body.

In the upper part it is formed by a deformable expansion chamber that allows anchoring the insert on the receiving material.

#### USE

The tubular threaded insert Nylon - nut is used in order to create threads on: boxed or tubular parts, fragile materials, plastic sheets and other materials.

#### ASSEMBLY

- Choose the correct Nylon - nut
- Prepare an appropriate hole to receive the insert
- Place the threaded tubular insert into the hole
- Assembly and deformation of the insert are achieved by screwing. No special tool is required.

#### CHARACTERISTICS AND ADVANTAGES

- High resistance to corrosion
- Reduced weight
- Anti - vibration properties
- No special tools required
- No finishing or additional operation is required after the installation
- The insert can be fixed on finished parts. Therefore it can be used at any stage of the production process
- It solves every thread problem on thin thicknesses.

SPECIALINSERT, COMMITS ITSELF TO CONTINUOUSLY IMPROVE ITS PRODUCTS. IT RESERVES THE RIGHT TO CHANGE THEIR TECHNICAL AND STRUCTURAL CHARACTERISTICS WITHOUT PRIOR NOTICE. ALL RIGHTS ARE RESERVED AND THE DUPLICATE, EVEN PARTIAL, OF THESE DOCUMENTS, AS WELL AS ITS DISTRIBUTION TO THIRD PARTIES, ARE FORBIDDEN, UNLESS OTHERWISE AND EXPRESSLY AUTHORIZED BY SPECIALINSERT.