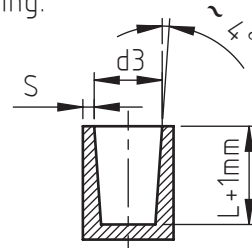
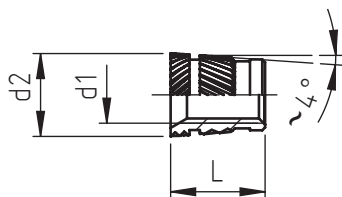


Applications:
thermoplastic materials
thermosetting materials

Assembly:
ultrasonic, heat, overmoulding,
overmoulding.

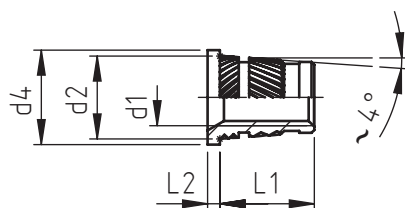
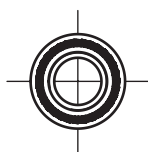
853/854



| code | metric thread | external diameter | total length | hole diameter | minimum wall thickness |
|-------------|---------------|-------------------|--------------|---------------|------------------------|
| | d1 | d2 | L | d3 0/+0,1 | S |
| 853 1020.80 | M 2 | 4,1 | 5,0 | 3,8 | 1,5 |
| 853 1025.80 | M 2,5 | 4,1 | 5,0 | 3,8 | 1,5 |
| 853 1030.80 | M 3 | 4,6 | 5,5 | 4,4 | 1,8 |
| 853 1035.80 | M 3,5 | 5,4 | 6,0 | 5,2 | 1,8 |
| 853 1040.80 | M 4 | 6,0 | 7,5 | 5,8 | 2,0 |
| 853 1050.80 | M 5 | 7,2 | 9,0 | 6,9 | 2,0 |
| 853 1060.80 | M 6 | 8,8 | 10,0 | 8,5 | 2,5 |
| 853 1080.80 | M 8 | 11,2 | 12,0 | 10,9 | 3,0 |

| code | total length |
|-------------|--------------|
| L | |
| - | - |
| - | - |
| 854 1030.80 | 5,0 |
| 854 1035.80 | 5,5 |
| 854 1040.80 | 6,0 |
| 854 1050.80 | 7,5 |
| 854 1060.80 | 9,0 |
| 854 1080.80 | 10,0 |

855



| code | metric thread | external diameter | head diameter | head thickness | anchorage dimension | hole diameter | minimum wall thickness |
|-------------|---------------|-------------------|---------------|----------------|---------------------|---------------|------------------------|
| | d1 | d2 | d4 | L2 | L1 | d3 0/+0,1 | S |
| 855 1020.80 | M 2 | 4,1 | 5,6 | 0,6 | 5,0 | 3,8 | 1,5 |
| 855 1025.80 | M 2,5 | 4,1 | 5,6 | 0,6 | 5,0 | 3,8 | 1,5 |
| 855 1030.80 | M 3 | 4,6 | 6,4 | 0,6 | 5,5 | 4,4 | 1,8 |
| 855 1035.80 | M 3,5 | 5,4 | 7,2 | 0,8 | 6,0 | 5,2 | 1,8 |
| 855 1040.80 | M 4 | 6,0 | 8,0 | 0,8 | 7,5 | 5,8 | 2,0 |
| 855 1050.80 | M 5 | 7,2 | 9,0 | 1,0 | 9,0 | 6,9 | 2,0 |
| 855 1060.80 | M 6 | 8,8 | 10,0 | 1,3 | 10,0 | 8,5 | 2,5 |
| 855 1080.80 | M 8 | 11,2 | 12,5 | 1,3 | 12,0 | 10,9 | 3,0 |

Non binding dimensions, expressed in mm.

For a correct usage of the product it is advisable to carry out some preliminary assembling tests to determine the correct hole diameter.

Standard

On demand

Not manufactured

Material: brass
 Finishing: natural
 Tolerances: ISO 2768 - m
 Threading d1: ISO 6 H
 Example: insert S-Lok with head, M5 thread, brass: 855 1050.80

