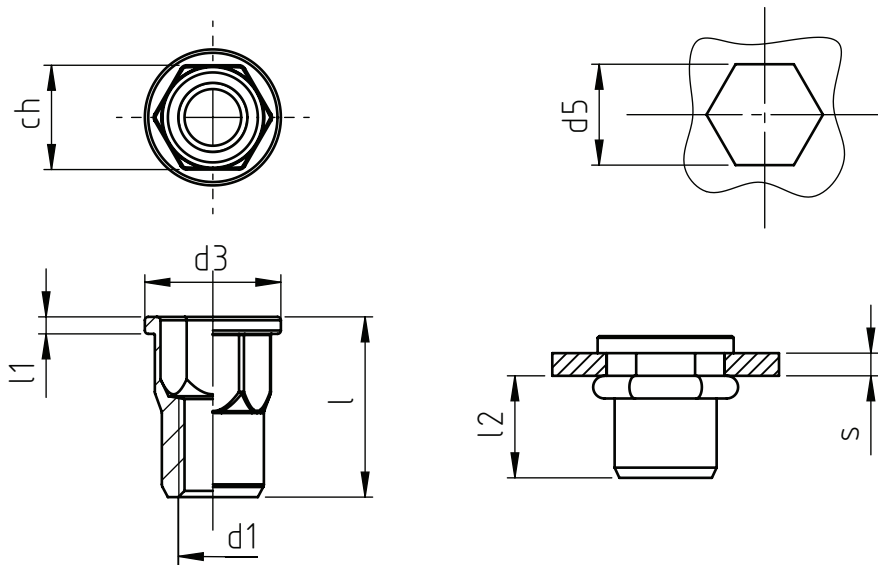


Application: metal and not metal sheets.
Assembly: with special hand or pneumatic tools.



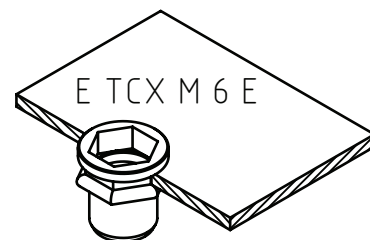
| code | s grip | l | d1 6H | ch | d3 | l1 ~ | d5 +0,15 0 | l2 * |
|-------------|-----------|------|----------|----|------|---------|------------------|---------|
| E TCX M 4 E | 0,5 ÷ 2,5 | 12 | M 4 | 6 | 9,0 | 1,0 | 6 | 7 |
| E TCX M 5 E | 0,5 ÷ 3,0 | 13 | M 5 | 7 | 10,0 | 1,0 | 7 | 7,5 |
| E TCX M 6 E | 0,5 ÷ 3,0 | 15,5 | M 6 | 9 | 12,0 | 1,5 | 9 | 8,5 |
| E TCX M 8 E | 0,5 ÷ 3,0 | 17,5 | M 8 | 11 | 14,5 | 1,5 | 11 | 11 |
| E TCX M10 E | 1,0 ÷ 3,5 | 21,0 | M10 | 13 | 16,5 | 2,0 | 13 | 13,5 |

Non binding dimensions, expressed in mm.

* Dimension determined from the average of the grip "s" min and max values.

Standard
 On demand
 Not manufactured

Material: stainless steel
 Finishing: natural
 Tolerance: where not specified, degree of accuracy (coarse) according to UNI EN 22768-1
 Thread: ISO 6 H metric
 Example: blind threaded nut, cylindrical head, semi-hexagonal shank, stainless steel, grip 2,0 mm, M 6 thread:
 E TCX M 6 E



SPECIALINSERT - COMMITS ITSELF TO CONTINUOUSLY IMPROVE ITS PRODUCTS - IT RESERVES THE RIGHT TO CHANGE THEIR TECHNICAL AND STRUCTURAL CHARACTERISTICS WITHOUT PRIOR NOTICE - ALL RIGHTS ARE RESERVED AND THE DUPLICATE, EVEN PARTIAL OF THESE DOCUMENTS, AS WELL AS ITS DISTRIBUTION TO THIRD PARTIES, ARE FORBIDDEN, UNLESS OTHERWISE AND EXPRESSLY AUTHORIZED BY SPECIALINSERT.