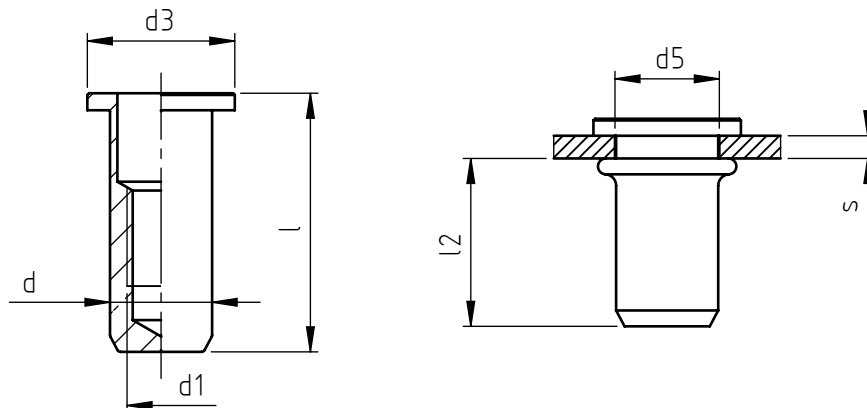


Application: metal and not metal sheets.  
Assembly: with special hand or pneumatic tools.



code	steel	stainless steel	s grip	l	d1 6H	d	d3	l1	d5 +0,15 0	l2 *
TC/TL/CH M 3/___	8S	X	0,5 ÷ 2,0	13	M 3	5	9	0,8	5	9,5
TC/TL/LCH M 3/___	8S	X	2,0 ÷ 3,5	14,5						
TC/TL/CH M 4/___	8S	X	0,5 ÷ 2,0	15	M 4	6	10	0,8	6	11
TC/TL/LCH M 4/___	8S	X	2,0 ÷ 4,0	17						
TC/TL/CH M 5/___	8S	X	0,5 ÷ 2,5	18	M 5	7	11	1	7	12,5
TC/TL/LCH M 5/___	8S	X	2,5 ÷ 4,5	20						
TC/TL/CH M 6/___	8S	X	0,5 ÷ 3,0	22,8	M 6	9	13	1,5	9	16
TC/TL/LCH M 6/___	8S	X	3,0 ÷ 5,5	25,3						
TC/TL/CH M 8/___	8S	X	0,5 ÷ 3,5	26	M 8	11	16	1,5	11	17,5
TC/TL/LCH M 8/___	8S	X	3,5 ÷ 6,0	28,5						
TC/TL/CH M10/___	8S	X	0,5 ÷ 3,5	31	M10	13	18	1,8	13	22
TC/TL/LCH M10/___	8S	X	3,5 ÷ 6,0	33,5						
TC/TL/CH M12/___	8S	X	0,5 ÷ 3,5	38,5	M12	16	23	2	16	28
TC/TL/LCH M12/___	8S	X	3,5 ÷ 6,5	41,5						

Non binding dimensions, expressed in mm.

\* Dimension determined from the average of the grip "s" min and max values.

Standard   
  On demand   
  Not manufactured

Material: steel nr.1.0303  
 stainless steel nr.1.4305  
 Finishing: steel: white zinc-plated  
 stainless steel: natural  
 Tolerances: according to UNI standards EN 22768-1  
 Thread: ISO 6 H metric  
 Example: blind threaded nut, cylindrical large  
 flange head, round shank, stainless steel,  
 grip 2,0 mm, M 6 thread:

TC/TL/CH M 6/X

