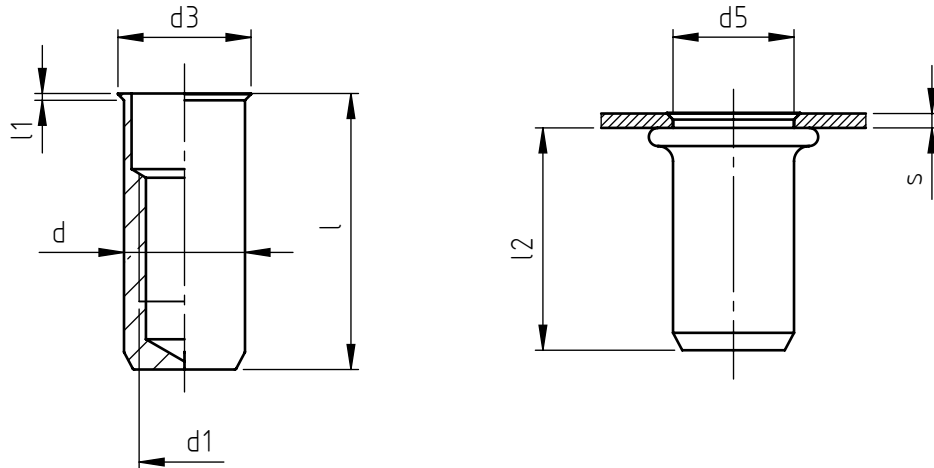


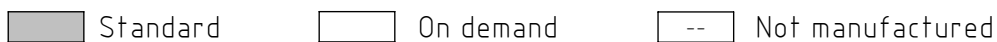
Application: metal and not metal sheets.  
Assembly: with special hand or pneumatic tools.



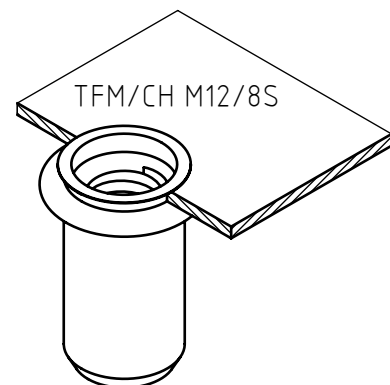
code	s grip	l	d1 6H	d	d3	l1 ~	d5 +0,15 0	l2 *
TFM/CH M12/8S	0,5 ÷ 3,5	36,5	M12	16	17,6	0,9	16	28,5
TFM/L/CH M12/8S	3,5 ÷ 6,5	39,5						

Non binding dimensions, expressed in mm.

\* Dimension determined from the average of the grip "s" min and max values.



Material: steel 6 UNI EN 20898/2  
Finishing: white zinc-plated  
Tolerances: according to UNI standards EN 22768-1  
Thread: ISO 6 H metric  
Example: blind threaded nut, low profile head  
round close-end shank, steel,  
grip 2,0 mm, M 12 thread:  
TFM/CH M12/8S



SPECIALINSERT - COMMITS ITSELF TO CONTINUOUSLY IMPROVE ITS PRODUCTS - IT RESERVES THE RIGHT TO CHANGE THEIR TECHNICAL AND STRUCTURAL CHARACTERISTICS WITHOUT PRIOR NOTICE - ALL RIGHTS ARE RESERVED AND THE DUPLICATION, EVEN PARTIAL OF THESE DOCUMENTS, AS WELL AS ITS DISTRIBUTION TO THIRD PARTIES ARE FORBIDDEN, UNLESS OTHERWISE AND EXPRESSLY AUTHORIZED BY SPECIALINSERT.