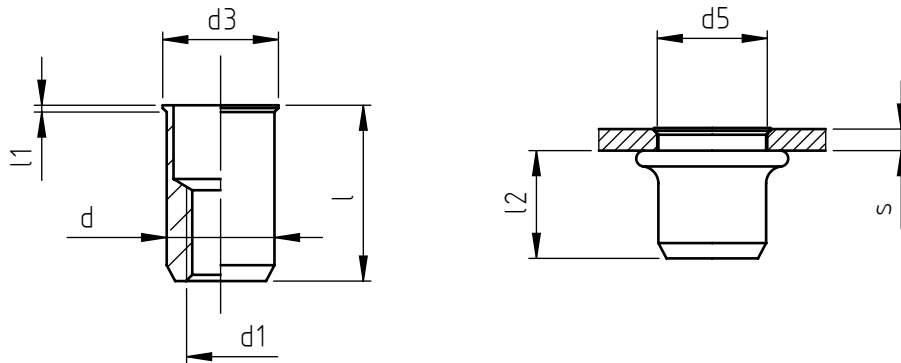


Application: metal and not metal sheets.
Assembly: with special hand or pneumatic tools.



code	s grip	l	d1 6H	d inch	d3	l1 ~	d5 +0,15 0	l2 *
TFP M 3/8	0,5 ÷ 2,0	9,5	M 3	4,8 (3/16")	5,2	0,4	4,8	6
TFP/L M 3/8	2,0 ÷ 3,5	11,5						
TFP M 4/8	0,5 ÷ 2,0	10,4	M 4	6,3 (1/4")	6,8	0,4	6,3	6,5
TFP/L M 4/8	2,0 ÷ 3,5	12,4						
TFP M 5/8	0,5 ÷ 2,5	11,6	M 5	7,1 (9/32")	7,7	0,5	7,1	7
TFP/L M 5/8	2,5 ÷ 4,5	13,6						
TFP M 6/8	0,5 ÷ 3,0	15,5	M 6	9,5 (3/8")	10,2	0,6	9,5	9,5
TFP/L M 6/8	3,0 ÷ 5,5	17,5						
TFP M 8/8	0,5 ÷ 3,5	15,5	M 8	12,7 (1/2")	13,5	0,7	12,7	9,5
TFP/L M 8/8	3,5 ÷ 6,0	18						
TFP M10/8	0,5 ÷ 3,5	18	M10	14,2 (9/16")	15,2	0,8	14,2	12,5
TFP/L M10/8	3,5 ÷ 6,0	20,5						

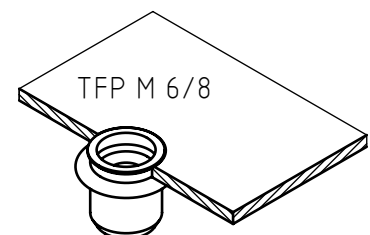
Non binding dimensions, expressed in mm.

* Dimension determined from the average of the grip "s" min and max values.

Standard
 On demand
 Not manufactured

Material: steel nr.1.0718
 Finishing: white zinc-plated
 Tolerances: according to UNI standards EN 22768-1
 Thread: ISO 6 H metric
 Example: blind threaded nut, profile head,
 round shank, steel, grip 2,0 mm,
 M 6 thread:

TFP M 6/8



SPECIALINSERT COMMITS ITSELF TO CONTINUOUSLY IMPROVE ITS PRODUCTS. IT RESERVES THE RIGHT TO CHANGE THEIR TECHNICAL AND STRUCTURAL CHARACTERISTICS WITHOUT PRIOR NOTICE. ALL RIGHTS ARE RESERVED AND THE DUPLICATION, EVEN PARTIAL, OF THESE DOCUMENTS, AS WELL AS ITS DISTRIBUTION TO THIRD PARTIES ARE FORBIDDEN, UNLESS OTHERWISE AND EXPRESSLY AUTHORIZED BY SPECIALINSERT.