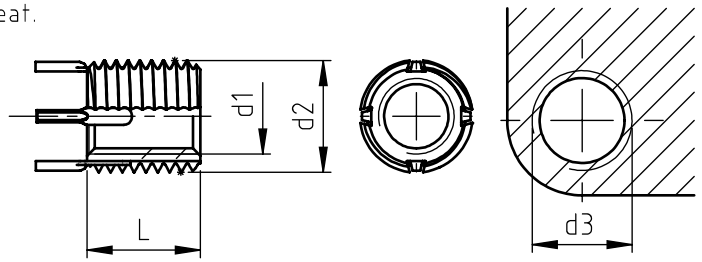


Application: on prepared material with threaded seat.
Dowel are pressed into the receiving material to prevent unscrewing of the insert.

Assembly: by manual or machine tools.
Dowels are inserted by pressure.



UNC/UNF series light

Product features					Installation				Disassembly	
code article steel	code article stainless steel	d1 internal 2B	d2 external 2A	L	hole preparation	Ø chamfer + 0,01 - 0,00	d3		Ø hole	depth
					Ø		2B	depth min.		
910010.24	911010.24	10-24	5/16-18	.31	.272	.32	5/16-18	.37	7/32	1/8
910010.32	911010.32	10-32		.31	.272	.32		.37	7/32	1/8
910014.20	911014.20	1/4-20	3/8-16	.37	.332	.38	3/8-16	.43	9/32	3/16
910014.28	911014.28	1/4-28		.37	.332	.38		.43	9/32	3/16
9100516.18	9110516.18	5/16-18	7/16-14	.43	.397	.44	7/16-14	.50	11/32	3/16
9100516.24	9110516.24	5/16-24		.43	.397	.44		.50	11/32	3/16
910038.16	911038.16	3/8-16	1/2-13	.50	.453	.51	1/2-13	.56	13/32	3/16
910038.24	911038.24	3/8-24		.50	.453	.51		.56	13/32	3/16
9100716.14	9110716.14	7/16-14	9/16-12	.56	.516	.57	9/16-12	.62	15/32	3/16
9100716.20	9110716.20	7/16-20		.56	.516	.57		.62	15/32	3/16
910012.13	911012.13	1/2-13	5/8-11	.62	.578	.63	5/8-11	.68	17/32	3/16
910012.20	911012.20	1/2-20		.62	.578	.63		.68	17/32	3/16

UNC/UNF series reinforced

Product features					Installation				Disassembly	
code article steel	code article stainless steel	d1 internal 2B	d2 external 2A	L	hole preparation	Ø chamfer + 0,10 - 0,00	d3		Ø hole	depth
					Ø		2B	depth min.		
92008.32	92108.32	8-32	5/16-18	.31	.272	.32	5/16-18	.37	7/32	1/8
920010.24	921010.24	10-24	3/8-16	.31	.332	.38	3/8-16	.37	9/32	1/8
920010.32	921010.32	10-32		.31	.332	.38		.37	9/32	1/8
920014.20	921014.20	1/4-20	7/16-14	.37	.397	.44	7/16-14	.43	11/32	3/16
920014.28	921014.28	1/4-28		.37	.397	.44		.43	11/32	3/16
9200516.18	9210516.18	5/16-18	1/2-13	.43	.453	.51	1/2-13	.50	13/32	3/16
9200516.24	9210516.24	5/16-24		.43	.453	.51		.50	13/32	3/16
920038.16	921038.16	3/8-16	9/16-12	.50	.516	.57	9/16-12	.56	15/32	3/16
920038.24	921038.24	3/8-24		.50	.516	.57		.56	15/32	3/16
9200716.14	9210716.14	7/16-14	5/8-11	.62	.578	.63	5/8-11	.68	17/32	3/16
9200716.20	9210716.20	7/16-20		.62	.578	.63		.68	17/32	3/16
920012.13	921012.13	1/2-13	11/16-11NS	.69	.641	.76	11/16-11NS	.68	19/32	3/16
920012.20	921012.20	1/2-20	11NS	.69	.641	.76	11NS	.68	19/32	3/16
9200916.12	9210916.12	9/16-12	13/16-16	.81	.766	.76	13/16-16	.94	23/32	3/16
9200916.18	9210916.18	9/16-18		.81	.766	.76		.94	23/32	3/16
920058.11	921058.11	5/8-11	7/8-14	.87	.828	.88	7/8-14	1.00	25/32	5/16
920058.18	921058.18	5/8-18		.87	.828	.88		1.00	25/32	5/16
920034.10	921034.10	3/4-10	1"1/8-12	1.12	1.062	1.14	1"1/8-12	1.31	31/32	5/16
920034.16	921034.16	3/4-16	1"1/8-12	1.12	1.062	1.14	1"1/8-12	1.31	31/32	5/16
920078.9	921078.9	7/8-9	1"1/4-12	1.25	1.187	1.27	1"1/4-12	1.44	1-3/32	5/16
920078.14	921078.14	7/8-14		1.25	1.187	1.27		1.44	1-3/32	5/16
92001.8	92101.8	1"-8	1"3/8-12	1.37	1.312	1.39	1"3/8-12	1.56	1-7/32	5/16
92001.12	92101.12	1"-12		1.37	1.312	1.39		1.56	1-7/32	5/16
92001.14	-	1"-14	1"1/2-12	1.62	1.437	1.52	1"1/2-12	1.84	1-11/32	5/16
920011/8.7	-	1"1/8-7		1.62	1.437	1.52		1.84	1-11/32	5/16
920011/8.12	-	1"1/8-12	1"5/8-12	1.81	1.562	1.64	1"5/8-12	2.06	1-15/32	5/16
920011/4.7	-	1"1/4-7		1.81	1.562	1.64		2.06	1-15/32	5/16
920011/4.12	-	1"1/4-12	1"7/8-12	2.00	1.812	1.89	1"7/8-12	2.28	1-23/32	5/16
920011/2.6	-	1"1/2-6		2.00	1.812	1.89		2.28	1-23/32	5/16
920011/2.12	-	1"1/2-12	2.00	1.812	1.89	2.28	2.28	1-23/32	5/16	

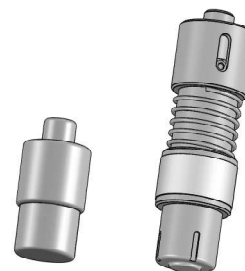
On demand

Standard

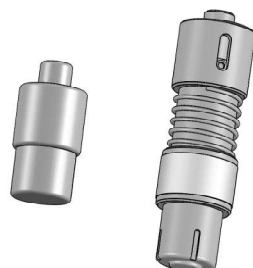
Other threads, forms and types on request. Non binding dimensions, expressed in inch.

SPECIALINSERT COMMITTS ITSELF TO CONTINUOUSLY IMPROVE ITS PRODUCTS. IT RESERVES THE RIGHT TO CHANGE THEIR TECHNICAL AND STRUCTURAL CHARACTERISTICS WITHOUT PRIOR NOTICE. ALL RIGHTS ARE RESERVED AND THE DUPLICATE, EVEN PARTIAL OF THESE DOCUMENTS, AS WELL AS ITS DISTRIBUTION TO THIRD PARTIES ARE FORBIDDEN, UNLESS OTHERWISE AND EXPRESSLY AUTHORIZED BY SPECIALINSERT.

Material: steel 910 _____ e 920 _____
 stainless steel AISI 303 911 _____ e 921 _____
 Finishing: dowel-insert steel: phosphating
 dowel-insert stainless steel: passivation
 Thread: d1 internal UNC/UNF standard
 Example: dowel bushing UNC/UNF series light
 5/16-18 thread, stainless steel: 91105/16.18



Tool laying



Series reinforced

Series light

Product features		tool laying punch	tool laying complete
code article steel	code article stainless steel		
910010.24	911010.24	911010.24.00	915010.24.00
910010.32	911010.32	911010.32.00	915010.32.00
91001/4.20	91101/4.20	91101/4.20.00	91501/4.20.00
91001/4.28	91101/4.28	91101/4.28.00	91501/4.28.00
91005/16.18	91105/16.18	91105/16.18.00	91505/16.18.00
91005/16.24	91105/16.24	91105/16.24.00	91505/16.24.00
91003/8.16	91103/8.16	91103/8.16.00	91503/8.16.00
91003/8.24	91103/8.24	91103/8.24.00	91503/8.24.00
91007/16.14	91107/16.14	91107/16.14.00	91507/16.14.00
91007/16.20	91107/16.20	91107/16.20.00	91507/16.20.00
91001/2.13	91101/2.13	91101/2.13.00	91501/2.13.00
91001/2.20	91101/2.20	91101/2.20.00	91501/2.20.00

Product features		tool laying punch	tool laying complete
code article steel	code article stainless steel		
92008.32	92108.32	92108.32.00	92508.32.00
920010.24	921010.24	921010.24.00	925010.24.00
920010.32	921010.32	921010.32.00	925010.32.00
92001/4.20	92101/4.20	92101/4.20.00	92501/4.20.00
92001/4.28	92101/4.28	92101/4.28.00	92501/4.28.00
92005/16.18	92105/16.18	92105/16.18.00	92505/16.18.00
92005/16.24	92105/16.24	92105/16.24.00	92505/16.24.00
92003/8.16	92103/8.16	92103/8.16.00	92503/8.16.00
92003/8.24	92103/8.24	92103/8.24.00	92503/8.24.00
92007/16.14	92107/16.14	92107/16.14.00	92507/16.14.00
92007/16.20	92107/16.20	92107/16.20.00	92507/16.20.00
92001/2.13	92101/2.13	92101/2.13.00	92501/2.13.00
92001/2.20	92101/2.20	92101/2.20.00	92501/2.20.00
92009/16.12	92109/16.12	92109/16.12.00	92509/16.12.00
92009/16.18	92109/16.18	92109/16.18.00	92509/16.18.00
92005/8.11	92105/8.11	92105/8.11.00	92505/8.11.00
92005/8.18	92105/8.18	92105/8.18.00	92505/8.18.00
92003/4.10	92103/4.10	92103/4.10.00	92503/4.10.00
92003/4.16	92103/4.16	92103/4.16.00	92503/4.16.00
92007/8.9	92107/8.9	92107/8.9.00	92507/8.9.00
92007/8.14	92107/8.14	92107/8.14.00	92507/8.14.00
92001.8	92101.8	92101.8.00	92501.8.00
92001.12	92101.12	92101.12.00	92501.12.00
92001.14	-	92101.14.00	92501.14.00
92001/8.7	-	92101/8.7.00	92501/8.7.00
92001/8.12	-	92101/8.12.00	92501/8.12.00
92001/4.7	-	92101/4.7.00	92501/4.7.00
92001/4.12	-	92101/4.12.00	92501/4.12.00
92001/2.6	-	92101/2.6.00	92501/2.6.00
92001/2.12	-	92101/2.12.00	92501/2.12.00

Assembly instructions:

- 1) drill hole according to the reference table, countersunk 90-100°
- 2) tap with standard tool
- 3) install the bush by manual or machine tool
- 4) insert the dowels by proper tools or punch
- 5) the bush is properly installed.

