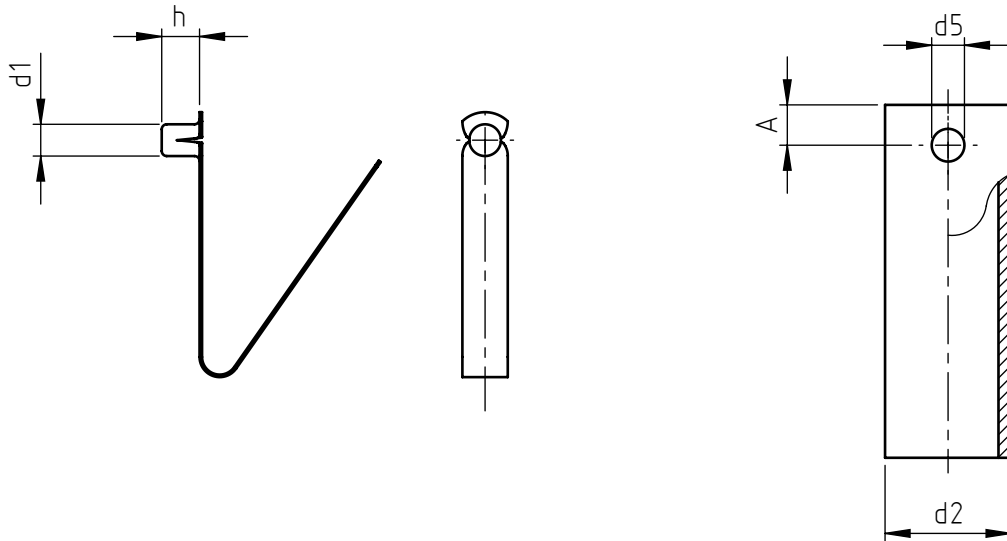


Application: adjustment telescopic tubes.
Assembly: by pressure.



code	d2 external diameter of the inner tube	d1 button diameter	h button height	d5 hole diameter on tube	A distance hole from tube edge
QS01/19	19	5,8	8	6,5	9
QS02/22	22	6,3	8	7,0	10
QS02/25	25	6,3	8	7,0	10
QS03/32	32	7,5	10	8,0	11
QS04/32	32	8,0	10	8,5	11

Dimensions and images are not binding, expressed in mm.

 Standard

 On demand

Material: steel

Finishing: surface treatment

